



Westbourne Terrace, W2 | Asking Price £525,000



TUCKERMAN
ESTATE AGENTS
PROPERTY PROFESSIONALS

Westbourne Terrace, London

A fantastic opportunity to acquire a one bedroom apartment with large private balcony on Westbourne Terrace.

DESCRIPTION

Situated in this stunning stucco fronted block and on the fourth floor, this desirable one bedroom flat extends over 440 square feet and comprises a bright and spacious living room with access to private balcony, semi-integrated kitchen, large double bedroom with integrated wardrobes and a bathroom suite. The property would benefit from a degree of modernisation, but would make the ideal pied-a-terre or rental investment. EPC Rating - D.

LOCATION

Westbourne Terrace is located between Paddington and Bayswater, with the shops and restaurants of Queensway and Westbourne Grove nearby as well as the open spaces of Hyde Park. Transport links include Paddington Mainline and underground stations (Bakerloo, Circle & District, Elizabeth Line, Hammersmith & City) and Lancaster Gate (Central Line) underground station.

TENURE

Share of Freehold + 944 year lease

CHARGES

Service Charge - £2,023.48 p.a.

Ground Rent - N/A





Westbourne Terrace, London

Asking Price:
£525,000 subject to contract.


Tenure:
Share of Freehold

Local Authority:
Westminster City Council

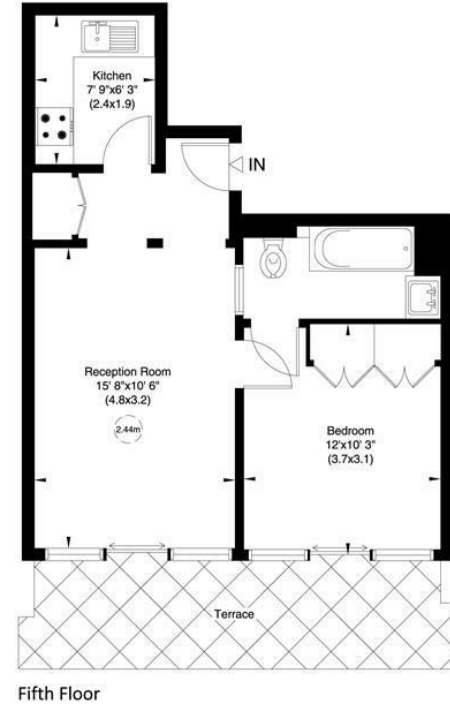
Council Tax Band:
D

Approximate Gross Internal Area:
440.00 sq ft

Energy Efficiency Rating

	Current	Potential
<i>Very energy efficient - lower running costs</i>		
(92 plus) A		
(81-91) B		
(69-80) C		78
(55-68) D	66	
(39-54) E		
(21-38) F		
(1-20) G		
<i>Not energy efficient - higher running costs</i>		
England & Wales	EU Directive 2002/91/EC	

Westbourne Terrace, W2
Approximate Gross Internal Area
41 sq m/ 440 sq ft
Not to Scale, for identification only



For guidance only and must not be relied upon as a statement of fact.
All measurements and areas are approximate only (and have been prepared in accordance with the current edition of the RICS Code of Measuring Practice).



020 7222 5510

info@tuckermanresidential.co.uk
52 Moreton Street, London, SW1PV 2PB
www.tuckermanresidential.co.uk

Agents Note: Whilst every care has been taken to prepare these sales particulars, they are for guidance purposes only. All measurements are approximate are for general guidance purposes only and whilst every care has been taken to ensure their accuracy, they should not be relied upon and potential buyers are advised to recheck the measurements

TUCKERMAN
ESTATE AGENTS
PROPERTY PROFESSIONALS